

# PRIMAflex<sup>TM</sup>

## IBS PRIMAflex<sup>TM</sup> EXTERIOR PANNELLING EXPLAINED

PRIMAflex<sup>TM</sup> is a cellulose fibre cement panel. Each panel has a smooth, uniform face and is ready to be finished with a variety of paint systems or overlaid with ceramic tiles, slate or stone composite products.

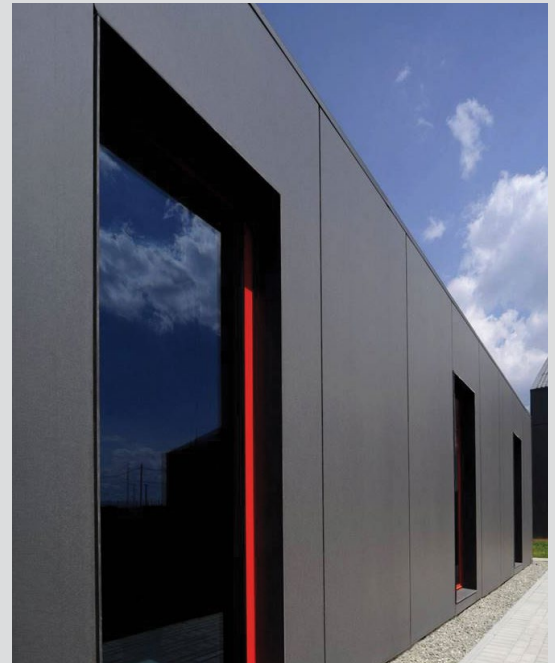
The panels are manufactured in a high-pressure chamber (called an autoclave) from high-grade cellulose pulp fibre, finely ground sand Portland cement and water.

This process makes PRIMAflex<sup>TM</sup> strong, durable and non-combustible. It is also moisture resistant and can help with soundproofing.

## DESCRIPTION AND USE

IBS supply PRIMAflex<sup>TM</sup> panels in various lengths, widths and thicknesses for the following specified uses:

Panel thickness	Panel Length (mm)	Panel width (mm)	Use
4.5mm	1800	1200	Soffit & eave lining External ceiling lining Suspended ceilings
	2400	300, 450, 600, 750, 900 & 1200	
	2700 & 3000	900 & 1200	
6.0mm	2400	900 & 1200	Soffit & eave lining External ceiling lining Suspended ceilings Subfloor enclosure Fire wall component External cladding
	2700 & 3000	1200	
7.5mm	2400	1200	Soffit & eave lining External ceiling lining Subfloor enclosure Fire wall component External cladding
9.0mm	2400	1200	Soffit & eave lining External ceiling or wall lining (using expressed joints) Fire wall component
16.0mm	2400	1200	Floor or deck substrate for ceramic tiles, slate and stone composite products Deck substrate for waterproof membranes



## SIGN OFF

SIGNED:



**Jason Bardell**  
Managing Director

**DATE: 22 Nov, 2017**

**VERSION: 1.0**

For further product assistance please contact:

**Name:** Jason Bardell

**Position:** Managing Director

**Phone:** 0800 367 759

**Mobile:** 027 491 3588

**Website:** [www.ibs.co.nz](http://www.ibs.co.nz)

Uncontrolled in printed format

Copyright © 2017, The Building Business Limited. All rights reserved.

## SCOPE OF USE

IBS supply **PRIMAflex**<sup>TM</sup> for use within the following scope:

### Location

- › In NZS3604:2011 wind zones up to and including extra high or 2.5kPa ULS.
- › In all corrosion zones.
- › Within 1m of a relevant boundary.

### Building

- › On new buildings that comply with the New Zealand Building Code (NZBC) or existing buildings where the designer and installer are satisfied that the existing building is suitable for the intended building work.
- › On timber or light gauge steel-framed buildings.
- › On buildings with a risk score of less than 20, calculated in accordance with E2/AS1, table 2.
- › On vertical and horizontal, flat surfaces, except for the tops of balustrades and parapets, which must have a minimum 5° slope.
- › With aluminium and wood window joinery that is installed with vertical jambs and horizontal heads and sills.
- › On a deck structure that has adequate fall to shed water.
- › On flat or raking ceilings and soffits.
- › In conjunction with a suspended ceiling design.
- › In conjunction with a fire rated wall or ceiling design.

## LIMITATIONS

Specification and installation must be in accordance with the **PRIMAflex**<sup>TM</sup> Design and Installation Guide.

Where restricted building work applies (RBW), **PRIMAflex**<sup>TM</sup> must be installed (or the installation must be supervised) by a Licenced Building Practitioner (LBP).

**PRIMAflex**<sup>TM</sup> must not be installed on timber framing where the moisture content is greater than 18%. We recommend using seasoned or kiln-dried timber framing.

Proprietary suspended framing systems must be able to support the applied loads of the **PRIMAflex**<sup>TM</sup>.

Always consult with the supplier/manufacturer for the recommended load that can be applied and the seismic requirements.

Consult with suppliers of waterproof membranes, tile adhesive, paint and plaster that selected products are compatible with **PRIMAflex**<sup>TM</sup>.

## COMPLIANCE WITH THE NZ BUILDING CODE

If designed, installed and maintained in accordance with all IBS requirements, **PRIMAflex**<sup>TM</sup> will comply with or contribute to compliance with the following provisions of the NZBC:

NZBC Clause	Evidence of compliance
<b>B1 Structure</b> B1.3.1, B1.3.2, B1.3.3 (a), (e), (i), (j) & (m)	BRANZ appraisal No.635 (2008)
<b>B2 Durability</b> B2.3.1 (b)	
<b>F2 Hazardous building materials</b> F2.3.1	
<b>C3 Fire affecting areas beyond the fire source</b> C3.7 (a)	AS1530.1: CSIRO Report No. FNC 9016  AS1530.1: CSIRO Report No. FNC 9015

## CERTIFICATIONS HELD BY PRIMAflex<sup>TM</sup>

- › ISO 9001: 2008 Quality System (Ref-AR0430-IQNet Certification)
- › ISO 14001: 2004 Environmental System (Ref- ER0642-IQNet Certification)

## USEFUL LINKS

For information on the design and specification of the panels, refer to:

- › **IBS PRIMAflex**<sup>TM</sup> [Design & Installation Guide](#)

For information to help install the panels, refer to:

- › **IBS PRIMAflex**<sup>TM</sup> [Design & Installation Guide](#)

For information to help maintain the panels, refer to:

- › **IBS PRIMAflex**<sup>TM</sup> [Care & Maintenance Guide](#)

For our warranty on IBS supplied panels refer to:

- › [IBS Warranty](#)

For more information on **PRIMAflex**<sup>TM</sup> visit:  
[www.ibs.co.nz](http://www.ibs.co.nz)